

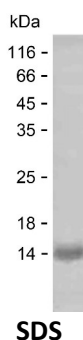
Product Name: Recombinant Human BCL2L13 Protein
Catalog #: PEH5277



Summary

Name	B2L13_HUMAN
Purity	Greater than 85% as determined by reducing SDS-PAGE
Endotoxin level	Please contact with the lab for this information
Tag	C-His
Accession #	Q9B XK5
Host	E.coli
Species	Human
Molecular Mass	14 kDa
Buffer	Lyophilized from Phosphate buffered saline
Shipping	The product is shipped on dry ice/polar packs. Upon receipt, store it immediately at the temperature listed below.
Stability&Storage	Store at $\leq -70^{\circ}\text{C}$, stable for 12 months after receipt. Store at $\leq -70^{\circ}\text{C}$, stable for 3 months under sterile conditions after opening. Please minimize freeze-thaw cycles.
Sequence	LQEQHLSSPQ GVQLDIASQS LDQEILLKVK TEIEEELKSL DKEISEAFTS TGFDRHTSPV FSPANPESSM EDCLAHLGK E VSQELKEPLH KALQMLLSQP VTYQAFRECT

image



Background

Alternative Names Bcl-2-like protein 13 (Bcl2-L-13) (Bcl-rambo) (Protein Mil1)

Note

For Research Use Only , Not for Diagnostic Use