

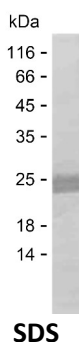
Product Name: Recombinant Human SSH1 Protein
Catalog #: PEH5187



Summary

Name	SSH1_HUMAN
Purity	Greater than 85% as determined by reducing SDS-PAGE
Endotoxin level	Please contact with the lab for this information
Tag	C-His
Accession #	Q8WYL5
Host	E.coli
Species	Human
Molecular Mass	18 kDa
Buffer	Lyophilized from Phosphate buffered saline
Shipping	The product is shipped on dry ice/polar packs. Upon receipt, store it immediately at the temperature listed below.
Stability&Storage	Store at $\leq -70^{\circ}\text{C}$, stable for 12 months after receipt. Store at $\leq -70^{\circ}\text{C}$, stable for 3 months under sterile conditions after opening. Please minimize freeze-thaw cycles.
Sequence	VAHLASRSRV PEKPASGPT E PPPFLPPAGS RRADTSGPGA GAALPPASL LEPSRETPKV LPKSLLKNS HCDKNPPSTE VVIKEESSPK KDMKPAKDLR LLFSNESEKP TTNSYLMQHQ ESIIQLQKAG LVRKHTKELE RLKSVPADPA

image



Background

Alternative Names Protein phosphatase Slingshot homolog 1 (EC 3.1.3.16) (EC 3.1.3.48) (SSH-like protein 1) (SSH-1L) (hSSH-1L)

Note

For Research Use Only , Not for Diagnostic Use