

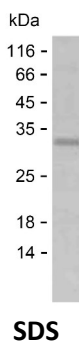
Product Name: Recombinant Human WIPF2 Protein
Catalog #: PEH5169



Summary

Name	WIPF2_HUMAN
Purity	Greater than 85% as determined by reducing SDS-PAGE
Endotoxin level	Please contact with the lab for this information
Tag	C-His
Accession #	Q8TF74
Host	E.coli
Species	Human
Molecular Mass	23 kDa
Buffer	Phosphate buffered saline
Shipping	The product is shipped on dry ice/polar packs. Upon receipt, store it immediately at the temperature listed below.
Stability&Storage	Store at $\leq -70^{\circ}\text{C}$, stable for 6 months after receipt. Store at $\leq -70^{\circ}\text{C}$, stable for 3 months under sterile conditions after opening. Please minimize freeze-thaw cycles.
Sequence	PALQIPSSRA AAPRPPVSAA SGRPQDDTDS SRASLPELPR MQRPSLPDLS RPNTTSSTGM KHSSSAPPPP PPGRRANAPP TPLPMHSSKA PAYNREKPLP PTPGQRLHPG REGPPAPPPV KPPPSPVNIR TGPSGQSLAP PPPPYRQPPG VPNGPSSPTN ESAPELPQRH NSLHRKTPGP VRGLAPPPPT SASPSLLSNR PPPPARDPPS

image



Background

Alternative Names WAS/WASL-interacting protein family member 2 (WASP-interacting protein-related protein) (WIP- and CR16-homologous protein) (WIP-related protein)

Note

Product Name: Recombinant Human WIPF2 Protein
Catalog #: PEH5169



For Research Use Only , Not for Diagnostic Use