

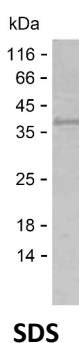
**Product Name: Recombinant Human CIP2A Protein**  
**Catalog #: PEH5157**



## Summary

<b>Name</b>	CIP2A_HUMAN
<b>Purity</b>	Greater than 85% as determined by reducing SDS-PAGE
<b>Endotoxin level</b>	Please contact with the lab for this information
<b>Tag</b>	C-His
<b>Accession #</b>	Q8TCG1
<b>Host</b>	E.coli
<b>Species</b>	Human
<b>Molecular Mass</b>	37 kDa
<b>Buffer</b>	Phosphate buffered saline
<b>Shipping</b>	The product is shipped on dry ice/polar packs. Upon receipt, store it immediately at the temperature listed below.
<b>Stability&amp;Storage</b>	Store at $\leq -70^{\circ}\text{C}$ , stable for 6 months after receipt. Store at $\leq -70^{\circ}\text{C}$ , stable for 3 months under sterile conditions after opening. Please minimize freeze-thaw cycles.
<b>Sequence</b>	NREQVQSGLR ILLEAAPLPD FPALVLGESI AANNAYRQQE TEHIPRKMPW QSSNHSFPTS IKCLTPHLKD GVPGLNIEEL IEKLQSGMVV KDQICDVRIS DIMDVYEMKL STLASKESSL QDLLETKALA LAQADRLIAQ HRCQRTQAET EARTLASMLR EVERKNEELS VLLKAQQVES ERAQSDIEHL FQHNRKLESV AEEHEILTKS YMELLQRNES TEKKNKDLQI TCDSL NKQIE TVKKL NESLK EQNEKSIAQL IEKEEQRKEV QNQLVDREHK LANLHQKTKV QEEKIKTLQK EREDKEETID

## image



## Background

**Alternative Names** Protein CIP2A (Cancerous inhibitor of PP2A) (p90 autoantigen)

**Product Name: Recombinant Human CIP2A Protein**  
**Catalog #: PEH5157**

---



**Note**

For Research Use Only , Not for Diagnostic Use