

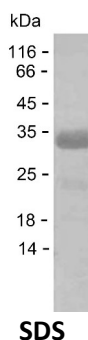
Product Name: Recombinant Human GPR156 Protein
Catalog #: PEH5138



Summary

Name	GP156_HUMAN
Purity	Greater than 85% as determined by reducing SDS-PAGE
Endotoxin level	Please contact with the lab for this information
Tag	C-His
Accession #	Q8NFN8
Host	E.coli
Species	Human
Molecular Mass	23 kDa
Buffer	Phosphate buffered saline
Shipping	The product is shipped on dry ice/polar packs. Upon receipt, store it immediately at the temperature listed below.
Stability&Storage	Store at $\leq -70^{\circ}\text{C}$, stable for 6 months after receipt. Store at $\leq -70^{\circ}\text{C}$, stable for 3 months under sterile conditions after opening. Please minimize freeze-thaw cycles.
Sequence	LLTEKNAVIE SLQEQVNNAK EKIVRLMSAE CTYDLPEGAA PPASSPNKDV QAVASVHTLA AAQGSPGHLS DFQNDPGMAA RDSQCTSGPS SYAQSLEGPG KDSSFSPGKE EKISDSKDFS DHLDSGCSQK PWTEQSLGPE RGDQVPMNPS QSLPERGGS DPQRQRHLEN SEPPERRSR VSSVIREKLQ

image



Background

Alternative Names Probable G-protein coupled receptor 156 (G-protein coupled receptor PGR28) (GABAB-related G-protein coupled receptor)

Note

For Research Use Only , Not for Diagnostic Use

Product Name: Recombinant Human GPR156 Protein
Catalog #: PEH5138

