

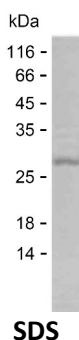
Product Name: Recombinant Human WASHC2A Protein
Catalog #: PEH4986



Summary

Name	WAC2A_HUMAN
Purity	Greater than 85% as determined by reducing SDS-PAGE
Endotoxin level	Please contact with the lab for this information
Tag	C-His
Accession #	Q641Q2
Host	E.coli
Species	Human
Molecular Mass	22 kDa
Buffer	Phosphate buffered saline
Shipping	The product is shipped on dry ice/polar packs. Upon receipt, store it immediately at the temperature listed below.
Stability&Storage	Store at $\leq -70^{\circ}\text{C}$, stable for 6 months after receipt. Store at $\leq -70^{\circ}\text{C}$, stable for 3 months under sterile conditions after opening. Please minimize freeze-thaw cycles.
Sequence	RPWSVEEIRR SSQSWSLAAD AGLLQFLQEF SQQTISRTHE IKKQVDGLIR ETKATDCRLH NVFNDFLMLS NTQFIENRVY DEEVEEPVLK AEAEKTEQEK TREQKEVDLI PKVQEAVNYG LQVLDSAFEQ LDIKAGNSDS EEDDANGRVE LILEPKDLYI DRPLPYLIGS

image



Background

Alternative Names WASH complex subunit 2A

Note

For Research Use Only , Not for Diagnostic Use

Product Name: Recombinant Human WASHC2A Protein
Catalog #: PEH4986

