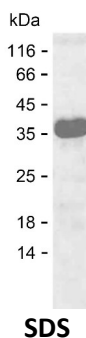


Summary

Name	BEND6_HUMAN
Purity	Greater than 85% as determined by reducing SDS-PAGE
Endotoxin level	Please contact with the lab for this information
Tag	C-His
Accession #	Q5SZJ8
Host	E.coli
Species	Human
Molecular Mass	32 kDa
Buffer	Lyophilized from Phosphate buffered saline
Shipping	The product is shipped on dry ice/polar packs. Upon receipt, store it immediately at the temperature listed below.
Stability&Storage	Store at $\leq -70^{\circ}\text{C}$, stable for 12 months after receipt. Store at $\leq -70^{\circ}\text{C}$, stable for 3 months under sterile conditions after opening. Please minimize freeze-thaw cycles.
Sequence	TNTQAFRKGK RKRTETMDSE NANSMDKGGQ RDPYSGNAFL PGESSEDEE PLAELSKEEL CAKIKSLKEK LTNTRKENSRLRQSLVMLQV LPQAVTQFEE LVGMAEALLK GGGTMSTSAS TLWRATNNSS PDSFASTCSN SNSNSSSPVS LKPEEEHQTD EKQFQIEKWQ IARCNKSKPQ KFINDLMQVL YTNEYMATHS LTGAKSSTSR DKAVKPAMNQ NEVQEIIGVT KQLFPNTDDV SIRRMIGQKL NNCTKKPNLS

image



Background

Alternative Names BEN domain-containing protein 6

Product Name: Recombinant Human BEND6 Protein
Catalog #: PEH4967



Note

For Research Use Only , Not for Diagnostic Use