

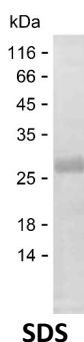
Product Name: Recombinant Human ELF2 Protein
Catalog #: PEH4923



Summary

Name	ELF2_HUMAN
Purity	Greater than 85% as determined by reducing SDS-PAGE
Endotoxin level	Please contact with the lab for this information
Tag	C-His
Accession #	Q15723
Host	E.coli
Species	Human
Molecular Mass	17 kDa
Buffer	Phosphate buffered saline
Shipping	The product is shipped on dry ice/polar packs. Upon receipt, store it immediately at the temperature listed below.
Stability&Storage	Store at $\leq -70^{\circ}\text{C}$, stable for 6 months after receipt. Store at $\leq -70^{\circ}\text{C}$, stable for 3 months under sterile conditions after opening. Please minimize freeze-thaw cycles.
Sequence	EVETENVETV EASVHSSNAH CTDKTIEAAE ALLHMESPTC LRDSRSPVEV FVPPCVSTPE FIHAAMRPDV ITETVVEVST EESEPMDTSP IPTSPDSHEP MKKKKVGRKP KTQQSPISNG SPELGIKKKP

image



Background

Alternative Names ETS-related transcription factor Elf-2 (E74-like factor 2) (New ETS-related factor)

Note

For Research Use Only , Not for Diagnostic Use