

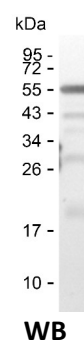
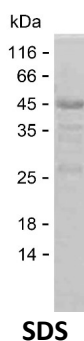
**Product Name: Recombinant Human MDC1 Protein**  
**Catalog #: PEH4910**



## Summary

<b>Name</b>	MDC1_HUMAN
<b>Purity</b>	Greater than 85% as determined by reducing SDS-PAGE
<b>Endotoxin level</b>	Please contact with the lab for this information
<b>Tag</b>	C-His
<b>Accession #</b>	Q14676
<b>Host</b>	E.coli
<b>Species</b>	Human
<b>Molecular Mass</b>	34 kDa
<b>Buffer</b>	Phosphate buffered saline
<b>Shipping</b>	The product is shipped on dry ice/polar packs.Upon receipt, store it immediately at the temperature listed below.
<b>Stability&amp;Storage</b>	Store at $\leq -70^{\circ}\text{C}$ , stable for 6 months after receipt.Store at $\leq -70^{\circ}\text{C}$ , stable for 3 months under sterile conditions after opening. Please minimize freeze-thaw cycles.
<b>Sequence</b>	PGAPGLAHLQ ESQAGSDTDV EEGKAPQAVP LEKSQASMVI NSDTDDEEEV SAALTLAHLK ESQPAIWNRD AEEDMPQRVV LLQRSQTTTE RDSDTDVEEE ELPVENREAV LKDHTKIRAL VRAHSEKDQP PFGSDSDSVE ADKSSPGIHL ERSQASTTVD INTQVEKEVP PGSIIHIKK HQVSVEGTNQ TDVKAVGGPA KLLVVSLEEA WPLHGDCETD AEEGTSLTAS VVADVRSKSQL PAEGDAGAEW AAAVLKQERA HEVGAQGGPP VAQVEQDLPI SRENLDLVV

## image



## Background

<b>Alternative Names</b>	Mediator of DNA damage checkpoint protein 1 (Nuclear factor with BRCT domains 1)
--------------------------	----------------------------------------------------------------------------------

**Product Name: Recombinant Human MDC1 Protein**  
**Catalog #: PEH4910**



---

**Note**

For Research Use Only , Not for Diagnostic Use