

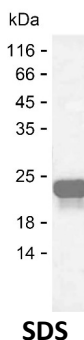
**Product Name: Recombinant Human SREBF2 Protein**  
**Catalog #: PEH4891**



## Summary

<b>Name</b>	SRBP2_HUMAN
<b>Purity</b>	Greater than 85% as determined by reducing SDS-PAGE
<b>Endotoxin level</b>	Please contact with the lab for this information
<b>Tag</b>	C-His
<b>Accession #</b>	Q12772
<b>Host</b>	E.coli
<b>Species</b>	Human
<b>Molecular Mass</b>	18 kDa
<b>Buffer</b>	Phosphate buffered saline
<b>Shipping</b>	The product is shipped on dry ice/polar packs. Upon receipt, store it immediately at the temperature listed below.
<b>Stability&amp;Storage</b>	Store at $\leq -70^{\circ}\text{C}$ , stable for 6 months after receipt. Store at $\leq -70^{\circ}\text{C}$ , stable for 3 months under sterile conditions after opening. Please minimize freeze-thaw cycles.
<b>Sequence</b>	RRTTHNII EK RYRSSINDKI IELKDLVMGT DAKMHKSGVL RKAIDYIKYL QQVNHKLRQE NMVLKLANQK NKLLKGIDLG SLVDNEVDLK IEDFNQNVLL MSPPASDSGS QAGFSPYSID SEPGSPLLDD AKVKDEPDSP

## image



## Background

<b>Alternative Names</b>	Sterol regulatory element-binding protein 2 (SREBP-2) (Class D basic helix-loop-helix protein 2) (bHLHd2) (Sterol regulatory element-binding transcription factor 2) [Cleaved into: Processed sterol regulatory element-binding protein 2 (Transcription factor SREBF2)]
--------------------------	--

## Note

**Product Name: Recombinant Human SREBF2 Protein**  
**Catalog #: PEH4891**



---

For Research Use Only , Not for Diagnostic Use