

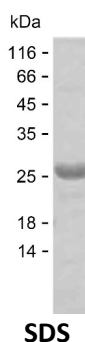
Product Name: Recombinant Human TLE4 Protein
Catalog #: PEH4884



Summary

Name	TLE4_HUMAN
Purity	Greater than 85% as determined by reducing SDS-PAGE
Endotoxin level	Please contact with the lab for this information
Tag	C-His
Accession #	Q04727
Host	E.coli
Species	Human
Molecular Mass	23 kDa
Buffer	Lyophilized from Phosphate buffered saline
Shipping	The product is shipped on dry ice/polar packs. Upon receipt, store it immediately at the temperature listed below.
Stability&Storage	Store at $\leq -70^{\circ}\text{C}$, stable for 12 months after receipt. Store at $\leq -70^{\circ}\text{C}$, stable for 3 months under sterile conditions after opening. Please minimize freeze-thaw cycles.
Sequence	MHKQAEIVKR LNAICAQVIP FLSQEHQQQV VQAVERAKQV TMAELNAIIG QQLQAQHLSH GHGLPVPLTP HPSGLQPPAI PPIGSSAGLL ALSSALGGQS HLPIKDEKKH HDNDHQRDRD SIKSSSVSPS ASFRGAEKHR NSADYSSESK KQKTEEKEIA ARYDSDGEKS DDNLVVDVSN EDPSSPRGSP

image



Background

Alternative Names Transducin-like enhancer protein 4 (Grg-4) (Groucho-related protein 4)

Note

For Research Use Only , Not for Diagnostic Use

Product Name: Recombinant Human TLE4 Protein
Catalog #: PEH4884

