

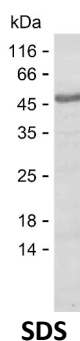
Product Name: Recombinant Human CALU Protein
Catalog #: PEH4728



Summary

Name	CALU_HUMAN
Purity	Greater than 85% as determined by reducing SDS-PAGE
Endotoxin level	Please contact with the lab for this information
Tag	C-His
Accession #	O43852
Host	E.coli
Species	Human
Molecular Mass	36 kDa
Buffer	Phosphate buffered saline
Shipping	The product is shipped on dry ice/polar packs. Upon receipt, store it immediately at the temperature listed below.
Stability&Storage	Store at $\leq -70^{\circ}\text{C}$, stable for 6 months after receipt. Store at $\leq -70^{\circ}\text{C}$, stable for 3 months under sterile conditions after opening. Please minimize freeze-thaw cycles.
Sequence	PTEKKDRVHH EPQLSDKVHN DAQSFYDHD AFLGAEAAKT FDQLTPEESK ERLGKIVSKI DGDKDGFTV DELKDWIKFA QKRWIYEDVE RQWKGHDLNE DGLVSWEEYK NATYGYVLDD PDPDDGFNYK QMMVRDERRF KMADKGDLI ATKEEFTAFI HPEEYDYMKD IVVQETMEDI DKNADGFIDL EEYIGDMYSH DGNTDEPEWV KTEREQFVEF RDKNRDGKMD KEETKDWILP SDYDHAEAEA RHLVYESDQN KDGKLTKEEI VDKYDLFVGS QATDFGEALV

image



Background

Alternative Names Calumenin (Crocalbin) (IEF SSP 9302)

Product Name: Recombinant Human CALU Protein
Catalog #: PEH4728



Note

For Research Use Only , Not for Diagnostic Use