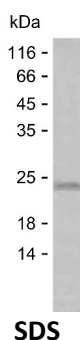


Summary

Name	MTG8R_HUMAN
Purity	Greater than 85% as determined by reducing SDS-PAGE
Endotoxin level	Please contact with the lab for this information
Tag	C-His
Accession #	O43439
Host	E.coli
Species	Human
Molecular Mass	21 kDa
Buffer	Phosphate buffered saline
Shipping	The product is shipped on dry ice/polar packs. Upon receipt, store it immediately at the temperature listed below.
Stability&Storage	Store at $\leq -70^{\circ}\text{C}$, stable for 6 months after receipt. Store at $\leq -70^{\circ}\text{C}$, stable for 3 months under sterile conditions after opening. Please minimize freeze-thaw cycles.
Sequence	EREWADEWKH LDHALNCIME MVEKTRRSMA VLRRQESDR EELNYWKRRY NENTELRKTG TELVSRQHSP GSADSLNDS QREFNSRPGT GYVPVEFWKK TEEAVNKVKI QAMSEVQKAV AEAEQKAFEV IATERARMEQ TIADV KROAA EDAFLVINEQ

image



Background

Alternative Names	Protein CBFA2T2 (ETO homologous on chromosome 20) (MTG8-like protein) (MTG8-related protein 1) (Myeloid translocation-related protein 1) (p85)
--------------------------	--

Note

For Research Use Only , Not for Diagnostic Use

Product Name: Recombinant Human CBFA2T2 Protein
Catalog #: PEH4723

