

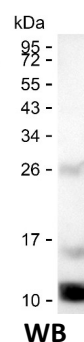
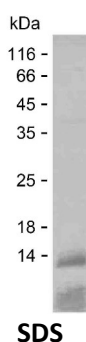
Product Name: Recombinant Human SETD1A Protein
Catalog #: PEH4718



Summary

Name	SET1A_HUMAN
Purity	Greater than 85% as determined by reducing SDS-PAGE
Endotoxin level	Please contact with the lab for this information
Tag	C-His
Accession #	O15047
Host	E.coli
Species	Human
Molecular Mass	10 kDa
Buffer	Lyophilized from Phosphate buffered saline
Shipping	The product is shipped on dry ice/polar packs. Upon receipt, store it immediately at the temperature listed below.
Stability&Storage	Store at $\leq -70^{\circ}\text{C}$, stable for 12 months after receipt. Store at $\leq -70^{\circ}\text{C}$, stable for 3 months under sterile conditions after opening. Please minimize freeze-thaw cycles.
Sequence	EGKTLPTAGT VGRVLAMLVQ EMKSIMQRDL NRKMVENVAF GAFDQWWESK EEKAKPFQNA AKQQAKEEDK

image



Background

Alternative Names Histone-lysine N-methyltransferase SETD1A (EC 2.1.1.354) (Lysine N-methyltransferase 2F) (SET domain-containing protein 1A) (hSET1A) (Set1/Ash2 histone methyltransferase complex subunit SET1)

Note

For Research Use Only , Not for Diagnostic Use