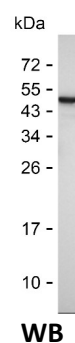
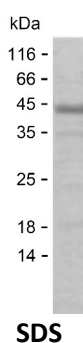


## Summary

<b>Name</b>	RTL1_HUMAN
<b>Purity</b>	Greater than 85% as determined by reducing SDS-PAGE
<b>Endotoxin level</b>	Please contact with the lab for this information
<b>Tag</b>	C-His
<b>Accession #</b>	A6NKG5
<b>Host</b>	E.coli
<b>Species</b>	Human
<b>Molecular Mass</b>	37 kDa
<b>Buffer</b>	Phosphate buffered saline
<b>Shipping</b>	The product is shipped on dry ice/polar packs.Upon receipt, store it immediately at the temperature listed below.
<b>Stability&amp;Storage</b>	Store at $\leq -70^{\circ}\text{C}$ , stable for 6 months after receipt.Store at $\leq -70^{\circ}\text{C}$ , stable for 3 months under sterile conditions after opening. Please minimize freeze-thaw cycles.
<b>Sequence</b>	PAQEKKEPPS GPLQEMEELP TDLLQDMEEP SSGPRKEIED PPNDLLQDLE ESCNGSHQAR GDPLSGASDR MKEASVNPSG AREEQEAHTD LKESGREETP QEQNQTEHST AELMAMVRSI ISLYFRMQDL KEQQRVAEEI LIKGINAGQL PAPKHFSGDR REFHEFIVLC QLTLSYPRM FYNDRLRVGY VINHLSGLAL EWAKALLQEN SPLIGDFPAF LEAMSEVFY RQALRVAAEA MFTIRQGGRS ATEYIDEFQS LVPILGWPDE VLQAHLCCQL NEEIRHYLFR VPQPDSLDSL IVLILQIEEK

## image



## Background

<b>Alternative Names</b>	Retrotransposon-like protein 1 (Mammalian retrotransposon derived protein 1) (Paternally expressed gene 11 protein) (Retrotransposon-derived
--------------------------	--

**Product Name: Recombinant Human RTL1 Protein**  
**Catalog #: PEH4680**



---

protein PEG11)

**Note**

For Research Use Only , Not for Diagnostic Use