

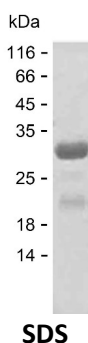
Product Name: Recombinant Human PSME2 Protein
Catalog #: PEH4639



Summary

Name	PSME2_HUMAN
Purity	Greater than 85% as determined by reducing SDS-PAGE
Endotoxin level	Please contact with the lab for this information
Tag	C-His
Accession #	Q9UL46
Host	E.coli
Species	Human
Molecular Mass	28 kDa
Buffer	Lyophilized from Phosphate buffered saline
Shipping	The product is shipped on dry ice/polar packs. Upon receipt, store it immediately at the temperature listed below.
Stability&Storage	Store at $\leq -70^{\circ}\text{C}$, stable for 12 months after receipt. Store at $\leq -70^{\circ}\text{C}$, stable for 3 months under sterile conditions after opening. Please minimize freeze-thaw cycles.
Sequence	MAKPCGVRLS GEARQVEVF RQNLFQEAE FLYRFLPQKI IYLNQLLQED SLNVADLTSL RAPLDIIPD PPPKDDEMET DKQEKKEVHK CGFLPGNEKV LSLLALVKPE VWTLEKCIL VITWQHLP KIEDGNDFGV AIQEKVLERV NAVKTKEAF QTTISKYFSE RGDAAKASK ETHVMDYRAL VHERDEAAYG ELRAMVLDLR AFYAELYHII SSNLEKIVNP KGEEKPSMY

image



Background

Alternative Names	Proteasome activator complex subunit 2 (11S regulator complex subunit beta) (REG-beta) (Activator of multicatalytic protease subunit 2) (Proteasome activator 28 subunit beta) (PA28b) (PA28beta)
--------------------------	---

Product Name: Recombinant Human PSME2 Protein
Catalog #: PEH4639



Note

For Research Use Only , Not for Diagnostic Use