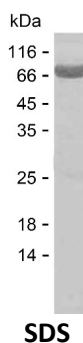


Summary

Name	ES8L2_HUMAN
Purity	Greater than 85% as determined by reducing SDS-PAGE
Endotoxin level	Please contact with the lab for this information
Tag	C-His
Accession #	Q9H6S3
Host	E.coli
Species	Human
Molecular Mass	66 kDa
Buffer	Phosphate buffered saline
Shipping	The product is shipped on dry ice/polar packs. Upon receipt, store it immediately at the temperature listed below.
Stability&Storage	Store at $\leq -70^{\circ}\text{C}$, stable for 6 months after receipt. Store at $\leq -70^{\circ}\text{C}$, stable for 3 months under sterile conditions after opening. Please minimize freeze-thaw cycles.
Sequence	PGATNGSLGR SDGVAKMSPK DLFEQRKKYS NSNVIMHETS QYHVQHLATF IMDKSEAITs VDDAIRKLVQ LSSKEKIWTQ EMLLQVNDQS LRLLDIESQE ELEDFFPLPTV QRSQTVLNQL RYPSVLLLVC QDSEQSKPDV HFFHCDEVEA ELVHEDIESA LADCRLGKKM RPQTLKGHQE KIRQRSILP PPQGPAPIPF QHRGGDSPEA KNRVGPQVPL SEPGFRRRES QEEPRAVLAQ KIEKETQILN CALDDIEWFV ARLQKAAEF KQLNQRKKGK KKGKKAPAEG VLTLRARPPS EGEFIDCFQK IKLAINLLAK LQKHIQNPSA AELVHFLFGP LDLIVNTCSG PDIARVSCP LLSRDAVDFL RGHLVPKEMS LWESLGESWM RPRSEWPREP QVPLYVPKFH SGWEPPVDVL QEAPWEVEGL ASAPIEEVSP VSRQSIRNSQ KHSPTSEPTP PGDALPPVSS PHTHRGYQPT PAMAKYVKIL YDFTARNANE LSVLKDEVLE VLEDGRQWWK LRSRSGQAGY VPCNILGEAR PEDAGAPFEQ AGQKYWGPAS PTHKLPPSFP

image



Product Name: Recombinant Human EPS8L2 Protein
Catalog #: PEH4607



Background

Alternative Names

Epidermal growth factor receptor kinase substrate 8-like protein 2 (EPS8-like protein 2) (Epidermal growth factor receptor pathway substrate 8-related protein 2) (EPS8-related protein 2)

Note

For Research Use Only , Not for Diagnostic Use