

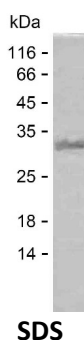
Product Name: Recombinant Human SUMF2 Protein
Catalog #: PEH4565



Summary

Name	SUMF2_HUMAN
Purity	Greater than 85% as determined by reducing SDS-PAGE
Endotoxin level	Please contact with the lab for this information
Tag	N-SUMO & C-His
Accession #	Q8NBJ7
Host	E.coli
Species	Human
Molecular Mass	26 kDa
Buffer	Phosphate buffered saline
Shipping	The product is shipped on dry ice/polar packs. Upon receipt, store it immediately at the temperature listed below.
Stability&Storage	Store at $\leq -70^{\circ}\text{C}$, stable for 6 months after receipt. Store at $\leq -70^{\circ}\text{C}$, stable for 3 months under sterile conditions after opening. Please minimize freeze-thaw cycles.
Sequence	VQLQGGRFLM GTNSPDSRDG DGPVREATVK PFAIDIFPVT NKDFRDFVRE KKYRTEAEMF GWSFVFEDFV SDEL RNKATQ PMKSVLWWLP VEKAFWRQPA GPGSGIRERL

image



Background

Alternative Names	Inactive C-alpha-formylglycine-generating enzyme 2 (Paralog of formylglycine-generating enzyme) (pFGE) (Sulfatase-modifying factor 2)
--------------------------	---

Note

For Research Use Only , Not for Diagnostic Use