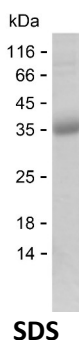


Summary

Name	MAP12_HUMAN
Purity	Greater than 85% as determined by reducing SDS-PAGE
Endotoxin level	Please contact with the lab for this information
Tag	N-SUMO & C-His
Accession #	Q6UB28
Host	E.coli
Species	Human
Molecular Mass	33 kDa
Buffer	Lyophilized from Phosphate buffered saline
Shipping	The product is shipped on dry ice/polar packs. Upon receipt, store it immediately at the temperature listed below.
Stability&Storage	Store at $\leq -70^{\circ}\text{C}$, stable for 12 months after receipt. Store at $\leq -70^{\circ}\text{C}$, stable for 3 months under sterile conditions after opening. Please minimize freeze-thaw cycles.
Sequence	FFRRQRDISH SIVLPAAVSS AHPVPKHIKK PDYVTTGIVP DWGDSIEVKN EDQIQGLHQA CQLARHVLL AGKSLKVDMT TEEIDALVHR EIISHNAYPS PLGYGGFPKS VCTSVNNVLC HGIPDSRPLQ DGDIIIDVT VYYNGYHGDT SETFLVGNVD ECGKKLVEVA

image



Background

Alternative Names	Methionine aminopeptidase 1D, mitochondrial (MAP 1D) (MetAP 1D) (EC 3.4.11.18) (Methionyl aminopeptidase type 1D, mitochondrial) (Peptidase M 1D)
--------------------------	---

Note

Product Name: Recombinant Human METAP1D Protein
Catalog #: PEH4555



For Research Use Only , Not for Diagnostic Use