

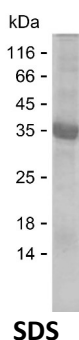
Product Name: Recombinant Human TLR1 Protein
Catalog #: PEH4532



Summary

Name	TLR1_HUMAN
Purity	Greater than 85% as determined by reducing SDS-PAGE
Endotoxin level	Please contact with the lab for this information
Tag	N-SUMO & C-His
Accession #	Q15399
Host	E.coli
Species	Human
Molecular Mass	31 kDa
Buffer	Phosphate buffered saline
Shipping	The product is shipped on dry ice/polar packs. Upon receipt, store it immediately at the temperature listed below.
Stability&Storage	Store at $\leq -70^{\circ}\text{C}$, stable for 6 months after receipt. Store at $\leq -70^{\circ}\text{C}$, stable for 3 months under sterile conditions after opening. Please minimize freeze-thaw cycles.
Sequence	KDLSQKTTIL NISQNYISEL WTS DILSLSK LRILISHNR IQYLDISVFK FNQELEYLDL SHNKLVKISC HPTVNLKHL D LSFNAFDALP ICKEFGNMSQ LKFLGLSTTH LEKSSVLP IA HLNISKVLLV LGETYGEKED PEG LQDFNTE

image



Background

Alternative Names Toll-like receptor 1 (EC 3.2.2.6) (Toll/interleukin-1 receptor-like protein) (TIL) (CD antigen CD281)

Note

For Research Use Only , Not for Diagnostic Use