

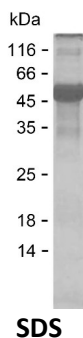
Product Name: Recombinant Human METAP1 Protein
Catalog #: PEH4494



Summary

Name	MAP11_HUMAN
Purity	Greater than 85% as determined by reducing SDS-PAGE
Endotoxin level	Please contact with the lab for this information
Tag	N-SUMO & C-His
Accession #	P53582
Host	E.coli
Species	Human
Molecular Mass	44 kDa
Buffer	Lyophilized from Phosphate buffered saline
Shipping	The product is shipped on dry ice/polar packs. Upon receipt, store it immediately at the temperature listed below.
Stability&Storage	Store at $\leq -70^{\circ}\text{C}$, stable for 12 months after receipt. Store at $\leq -70^{\circ}\text{C}$, stable for 3 months under sterile conditions after opening. Please minimize freeze-thaw cycles.
Sequence	KREVSSWTVE GDINTDPWAG YRYTGKLRPH YPLMPTRPVP SYIQRPDYAD HPLGMSESEQ ALKGTSQIKL LSSDIEGMR LVCRLAREVL DVAAGMIKPG VTTEEIDHAV HLACIARNCY PSPLNYYNFP KSCCTSVNEV ICHGIPDRRP LQEGDIVNVD ITLYRNGYHG DLNETFFVGE VDDGARKLVQ TTYECLMQAI DAVKPGVRYR ELGNIQKHA QANGFSVVRS YCGHGIHKLF HTAPNVPHYA KNKAVGVMKS GHVFTIEPMI

image



Background

Alternative Names	Methionine aminopeptidase 1 (MAP 1) (MetAP 1) (EC 3.4.11.18) (Peptidase M 1)
--------------------------	--

Product Name: Recombinant Human METAP1 Protein
Catalog #: PEH4494



Note

For Research Use Only , Not for Diagnostic Use