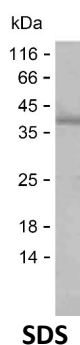


Summary

Name	EPHA3_HUMAN
Purity	Greater than 85% as determined by reducing SDS-PAGE
Endotoxin level	Please contact with the lab for this information
Tag	C-His
Accession #	P29320
Host	E.coli
Species	Human
Molecular Mass	39 kDa
Buffer	Lyophilized from Phosphate buffered saline
Shipping	The product is shipped on dry ice/polar packs. Upon receipt, store it immediately at the temperature listed below.
Stability&Storage	Store at $\leq -70^{\circ}\text{C}$, stable for 12 months after receipt. Store at $\leq -70^{\circ}\text{C}$, stable for 3 months under sterile conditions after opening. Please minimize freeze-thaw cycles.
Sequence	KSKHGADEKR LHFNGHKL PGLRTYVDPH TYEDPTQAVH EFAKELDATN ISIDKVVGAG EFGEVCSGRL KLPSKKEISV AIKTLKVGYT EKQRDFLGE ASIMGQFDHP NIIRLEGVVT KSKPVMIVTE YMENGLDSF LRKHDAQFTV IQLVGMLRGI ASGMKYLSDM GYVHRDLAAR NILINSNLVC KVSDFGLSRV LEDDPEAAYT TRGGKIPIRW TSPEAIAYRK FTSASDVWSY GIVLWEVMSY GERPYWEMSN QDVIKAVDEG YRLPPPMDCP AALYQLMLDC WQKDRNNRPK FEQIVSILDK LIRNPGSLKI ITSAAARPSN

image



Background

Alternative Names	Ephrin type-A receptor 3 (EC 2.7.10.1) (EPH-like kinase 4) (EK4) (hEK4) (HEK) (Human embryo kinase) (Tyrosine-protein kinase TYRO4) (Tyrosine-protein
--------------------------	---

Product Name: Recombinant Human EPHA3 Protein
Catalog #: PEH4461



kinase receptor ETK1) (Eph-like tyrosine kinase 1)

Note

For Research Use Only , Not for Diagnostic Use