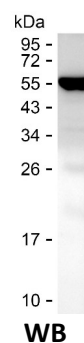


Summary

Name	IF_HUMAN
Purity	Greater than 85% as determined by reducing SDS-PAGE
Endotoxin level	Please contact with the lab for this information
Tag	N-SUMO & C-His
Accession #	P27352
Host	E.coli
Species	Human
Molecular Mass	50 kDa
Buffer	Phosphate buffered saline
Shipping	The product is shipped on dry ice/polar packs. Upon receipt, store it immediately at the temperature listed below.
Stability&Storage	Store at $\leq -70^{\circ}\text{C}$, stable for 6 months after receipt. Store at $\leq -70^{\circ}\text{C}$, stable for 3 months under sterile conditions after opening. Please minimize freeze-thaw cycles.
Sequence	MNLAGAYNLK AQKLLTYQLM SSDNNDLTIG QLGLTIMALT SSCRDPGDKV SILQRQMENW APSSPNAEAS AFYGPSLAIL ALCQKNSEAT LPIAVRFAKT LLANSSPFNV DTGAMATLAL TCMYNKIPVG SEEGYRSLFG QVLKDIVEKI SMKIKDNGII GDIYSTGLAM QALSVTPEPS KKEWNCKKTT DMILNEIKQG KFHNPMSIAQ ILPSLKGKTY LDVPQVTCSP DHEVQPTLPS NPGPGPTSAS NITVIYTINN QLRGVLELFN ETINVSVKSG SVLLVVLEEA QRKNPMFKFE TTMTSWGLVV SSINNIAENV NHKTYWQFLS GVTPLNEGVA

image



Background

Alternative Names	Cobalamin binding intrinsic factor (Gastric intrinsic factor) (Intrinsic factor) (IF) (INF)
--------------------------	---

Product Name: Recombinant Human CBLIF Protein
Catalog #: PEH4455



Note

For Research Use Only , Not for Diagnostic Use