

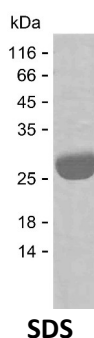
Product Name: Recombinant Human COMT Protein
Catalog #: PEH4432



Summary

Name	COMT_HUMAN
Purity	Greater than 85% as determined by reducing SDS-PAGE
Endotoxin level	Please contact with the lab for this information
Tag	C-His
Accession #	P21964
Host	E.coli
Species	Human
Molecular Mass	25 kDa
Buffer	Phosphate buffered saline
Shipping	The product is shipped on dry ice/polar packs. Upon receipt, store it immediately at the temperature listed below.
Stability&Storage	Store at $\leq -70^{\circ}\text{C}$, stable for 6 months after receipt. Store at $\leq -70^{\circ}\text{C}$, stable for 3 months under sterile conditions after opening. Please minimize freeze-thaw cycles.
Sequence	NHVLQHAEPG NAQSVLEAID TYCEQKEWAM NVGDKKGGKIV DAVIQEHQPS VLELGGAYCG YSAVRMARLL SPGARLITIE INPDCAAITQ RMVDFAGVKD KVTLVVGASQ DIIPQLKKKY DVDTLDMVFL DHWKDRYLPD TLLLEECGLL RKGTVLLADN VICPGAPDFL AHVRGSSCFE CTHYQSFLEY REVVDGLEKA IYKGGPSEAG

image



Background

Alternative Names Catechol O-methyltransferase (EC 2.1.1.6)

Note

Product Name: Recombinant Human COMT Protein
Catalog #: PEH4432



For Research Use Only , Not for Diagnostic Use