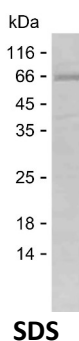


## Summary

<b>Name</b>	PTPRF_HUMAN
<b>Purity</b>	Greater than 85% as determined by reducing SDS-PAGE
<b>Endotoxin level</b>	Please contact with the lab for this information
<b>Tag</b>	C-His
<b>Accession #</b>	P10586
<b>Host</b>	E.coli
<b>Species</b>	Human
<b>Molecular Mass</b>	67 kDa
<b>Buffer</b>	Lyophilized from Phosphate buffered saline
<b>Shipping</b>	The product is shipped on dry ice/polar packs. Upon receipt, store it immediately at the temperature listed below.
<b>Stability&amp;Storage</b>	Store at $\leq -70^{\circ}\text{C}$ , stable for 12 months after receipt. Store at $\leq -70^{\circ}\text{C}$ , stable for 3 months under sterile conditions after opening. Please minimize freeze-thaw cycles.
<b>Sequence</b>	IERLKANDGL KFSQEYESID PGQQFTWENS NLEVNKPKNR YANVIAYDHS RVILTSIDGV PGSDYINANY IDGYRKQNAV IATQGPLPET MGDFWRMVWE QRTATVMMT RLEEKSRVKC DQYWPARGTE TCGLIQVTLT DTVELATYTV RTFALHKSGS SEKRELRQFQ FMAWPDHGVP EYTPILAFLL RRVKACNPLD AGPMVVHCSA GVGRTGCFIV IDAMLERMKH EKTVDIYGHV TCMRSQRNYM VQTEDQYVFI HEALLEAATC GHTEVPARNL YAHIQKLGQV PPGESVTAME LEFKLLASSK AHTSRFISAN LPCNKFKNRL VNIMPYELTR VCLQPIRGVE GSDYINASFL DGYRQQKAYI ATQGPLAEST EDFWRMLWEH NSTIIVMLTK LREMGREKCH QYWPAERSAR YQYFVVDPMA EYNMPQYILR EFKVTDARDG QSRTIRQFQF TDWPEQGVPK TGEGFIDFIG QVHKTEQFG QDGPITVHCS AGVGRTGVFI TLSIVLERMR YEGVVDMFQT VKTLRTQRPA MVQTEDQYQL CYRAALEYLG

## image



**Product Name: Recombinant Human PTPRF Protein**  
**Catalog #: PEH4406**



---

## Background

**Alternative Names** Receptor-type tyrosine-protein phosphatase F (EC 3.1.3.48) (Leukocyte common antigen related) (LAR)

## Note

For Research Use Only , Not for Diagnostic Use