

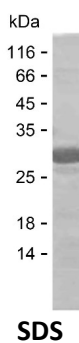
Product Name: Recombinant Human CTSB Protein
Catalog #: PEH4399



Summary

| | |
|------------------------------|--|
| Name | CATH_HUMAN |
| Purity | Greater than 85% as determined by reducing SDS-PAGE |
| Endotoxin level | Please contact with the lab for this information |
| Tag | N-SUMO & C-His |
| Accession # | P09668 |
| Host | E.coli |
| Species | Human |
| Molecular Mass | 24 kDa |
| Buffer | Phosphate buffered saline |
| Shipping | The product is shipped on dry ice/polar packs. Upon receipt, store it immediately at the temperature listed below. |
| Stability&Storage | Store at $\leq -70^{\circ}\text{C}$, stable for 6 months after receipt. Store at $\leq -70^{\circ}\text{C}$, stable for 3 months under sterile conditions after opening. Please minimize freeze-thaw cycles. |
| Sequence | ESAIAIATGK MLSLAEQQLV DCAQDFNNHG CQGGLPSQAF EYILYNKGIM GEDTYPYQGK DGYCKFQPGK AIGFVKDVAN ITIYDEEAMV EAVALYNPVS |

image



Background

| | |
|--------------------------|--|
| Alternative Names | Pro-cathepsin H [Cleaved into: Cathepsin H mini chain; Cathepsin H (EC 3.4.22.16); Cathepsin H heavy chain; Cathepsin H light chain] |
|--------------------------|--|

Note

For Research Use Only , Not for Diagnostic Use