

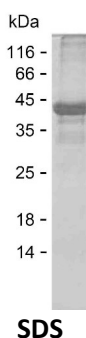
Product Name: Recombinant Human RET Protein
Catalog #: PEH4390



Summary

Name	RET_HUMAN
Purity	Greater than 85% as determined by reducing SDS-PAGE
Endotoxin level	Please contact with the lab for this information
Tag	C-His
Accession #	P07949
Host	E.coli
Species	Human
Molecular Mass	44 kDa
Buffer	Phosphate buffered saline
Shipping	The product is shipped on dry ice/polar packs. Upon receipt, store it immediately at the temperature listed below.
Stability&Storage	Store at $\leq -70^{\circ}\text{C}$, stable for 6 months after receipt. Store at $\leq -70^{\circ}\text{C}$, stable for 3 months under sterile conditions after opening. Please minimize freeze-thaw cycles.
Sequence	SAEMTFRRPA QAFPVSYSSS GARRPSLD SM ENQVSDAFK ILEDPKWEFP RKNLVLGKTL GEGEFGKVVK ATAFHLKGRA GYTTVAVKML KENASPSELR DLLSEFNVLK QVNHPHVIKL YGACSQDGPL LLIVEYAKYG SLRGFLRESR KVGPGYLGSG GSRNSSLDH PDERALTMGD LISFAWQISQ GMQYLAEMKL VHRDLAARNI LVAEGRKMKI SDFGLSRDVY EEDSYVKRSQ GRIPVKWMAI ESLFDHIYTT QSDVWSFGVL LWEIVTLGGN PYPGIPPERL FNLLKTGHRM ERPDNCSEEM YRLMLQCWKQ EPDKRPVFAD ISKDLEKMMV KRRDYLDLAA STPSDSLIIYD

image



Background

Alternative Names Proto-oncogene tyrosine-protein kinase receptor Ret (EC 2.7.10.1) (Cadherin

Product Name: Recombinant Human RET Protein
Catalog #: PEH4390



family member 12) (Proto-oncogene c-Ret) [Cleaved into: Soluble RET kinase fragment; Extracellular cell-membrane anchored RET cadherin 120 kDa fragment]

Note

For Research Use Only , Not for Diagnostic Use