

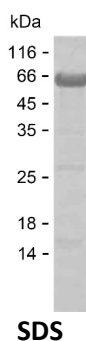
Product Name: Recombinant Human ATP6AP2 Protein
Catalog #: PEH4359



Summary

Name	RENH_HUMAN
Purity	Greater than 85% as determined by reducing SDS-PAGE
Endotoxin level	Please contact with the lab for this information
Tag	N-MBP & C-His
Accession #	O75787
Host	E.coli
Species	Human
Molecular Mass	74 kDa
Buffer	Phosphate buffered saline
Shipping	The product is shipped on dry ice/polar packs. Upon receipt, store it immediately at the temperature listed below.
Stability&Storage	Store at $\leq -70^{\circ}\text{C}$, stable for 6 months after receipt. Store at $\leq -70^{\circ}\text{C}$, stable for 3 months under sterile conditions after opening. Please minimize freeze-thaw cycles.
Sequence	ILKSPGSVVF RINGNWPIIGE RIPDVAALSM GFSVKEDLSW PGLAVGNLFH RPRATVMVMV KGVNKLALPP GSVISYPLEN AVPFSLDSVA NSIHSLSFEE TPVVLQLAPS EERVYVMVGKA NSVFEDLSVT LRQLRNRLFQ ENSVLSSLPL NLSLRNNEVD LLFLSELQVL HDISSLLSRH KHLAKDHSPD LYSLELAGLD EIGKRYGEDS EQFRDASKIL VDALQKFADD MYSLYGGNAV VELVTVKSFD TSLIRKTRTI LEAKQAKNPA SPYNLAYKYN

image



Background

Alternative Names	Renin receptor (ATPase H(+)-transporting lysosomal accessory protein 2) (ATPase H(+)-transporting lysosomal-interacting protein 2) (ER-localized type I transmembrane adapter) (Embryonic liver differentiation factor 10) (N14F)
--------------------------	---

Product Name: Recombinant Human ATP6AP2 Protein
Catalog #: PEH4359



(Renin/prorenin receptor) (Vacuolar ATP synthase membrane sector-associated protein M8-9) (ATP6M8-9) (V-ATPase M8.9 subunit) [Cleaved into: Renin receptor N-terminal fragment; Renin receptor C-terminal fragment]

Note

For Research Use Only , Not for Diagnostic Use