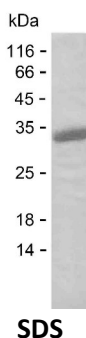


## Summary

<b>Name</b>	HTRA2_HUMAN
<b>Purity</b>	Greater than 85% as determined by reducing SDS-PAGE
<b>Endotoxin level</b>	Please contact with the lab for this information
<b>Tag</b>	C-His
<b>Accession #</b>	O43464
<b>Host</b>	E.coli
<b>Species</b>	Human
<b>Molecular Mass</b>	27 kDa
<b>Buffer</b>	Phosphate buffered saline
<b>Shipping</b>	The product is shipped on dry ice/polar packs. Upon receipt, store it immediately at the temperature listed below.
<b>Stability&amp;Storage</b>	Store at $\leq -70^{\circ}\text{C}$ , stable for 6 months after receipt. Store at $\leq -70^{\circ}\text{C}$ , stable for 3 months under sterile conditions after opening. Please minimize freeze-thaw cycles.
<b>Sequence</b>	TAVDPVADIA TLRIQTKEPL PTLPLGRSAD VRQGEFVVAM GSPFALQNTI TSGIVSSAQR PARDLGLPQT NVEYIQTDAE IDFGNSGGPL VNLDGEVIGV NTMKVTAGIS FAIPSDRLRE FLHRGEKKNS SSGISGSQRR YIGVMMLTLS PSILAEQLR EPSFPDVQHG VLIHKVILGS PAHRAGLRPG DVILAIGEQM VQNAEDVYEA VRTQSQLAVQ IRRGRETLL

## image



## Background

<b>Alternative Names</b>	Serine protease HTRA2, mitochondrial (EC 3.4.21.108) (High temperature requirement protein A2) (HtrA2) (Omi stress-regulated endoprotease) (Serine protease 25) (Serine proteinase OMI)
--------------------------	---

**Product Name: Recombinant Human HTRA2 Protein**  
**Catalog #: PEH4350**



---

**Note**

For Research Use Only , Not for Diagnostic Use