

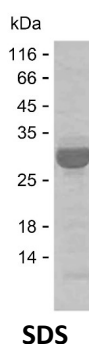
Product Name: Recombinant Human HTRA1 Protein
Catalog #: PEH4296



Summary

Name	HTRA1_HUMAN
Purity	Greater than 85% as determined by reducing SDS-PAGE
Endotoxin level	Please contact with the lab for this information
Tag	N-SUMO & C-His
Accession #	Q92743
Host	E.coli
Species	Human
Molecular Mass	24 kDa
Buffer	Lyophilized from Phosphate buffered saline
Shipping	The product is shipped on dry ice/polar packs. Upon receipt, store it immediately at the temperature listed below.
Stability&Storage	Store at $\leq -70^{\circ}\text{C}$, stable for 12 months after receipt. Store at $\leq -70^{\circ}\text{C}$, stable for 3 months under sterile conditions after opening. Please minimize freeze-thaw cycles.
Sequence	QAKGKAITKK KYIGIRMMSL TSSKAKELKD RHRDFPDVIS GAYIIEVIPD TPAEAGGLKE NDVIISINGQ SVVSANDVSD VIKRESTLNM

image



Background

Alternative Names Serine protease HTRA1 (EC 3.4.21.-) (High-temperature requirement A serine peptidase 1) (L56) (Serine protease 11)

Note

For Research Use Only , Not for Diagnostic Use