

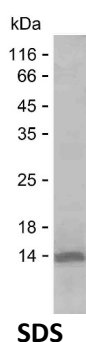
**Product Name: Recombinant Human LRP2BP Protein**  
**Catalog #: PEH4288**



## Summary

|                              |   |
|------------------------------|---|
| <b>Name</b>                  | LR2BP_HUMAN   |
| <b>Purity</b>                | Greater than 85% as determined by reducing SDS-PAGE   |
| <b>Endotoxin level</b>       | Please contact with the lab for this information  |
| <b>Tag</b>                   | C-His   |
| <b>Accession #</b>           | Q9P2M1  |
| <b>Host</b>                  | E.coli  |
| <b>Species</b>               | Human   |
| <b>Molecular Mass</b>        | 11 kDa  |
| <b>Buffer</b>                | Lyophilized from Phosphate buffered saline  |
| <b>Shipping</b>              | The product is shipped on dry ice/polar packs. Upon receipt, store it immediately at the temperature listed below.  |
| <b>Stability&amp;Storage</b> | Store at $\leq -70^{\circ}\text{C}$ , stable for 12 months after receipt. Store at $\leq -70^{\circ}\text{C}$ , stable for 3 months under sterile conditions after opening. Please minimize freeze-thaw cycles. |
| <b>Sequence</b>              | NLVDKALQLL KERILKGDTL AYFLRGQLYF EEGWYEEALE QFEEIKEKDH<br>QATYQLGVMY YDGLGTTLDA   |

## image



## Background

**Alternative Names** LRP2-binding protein (Megalin-binding protein) (MegBP)

## Note

For Research Use Only , Not for Diagnostic Use