

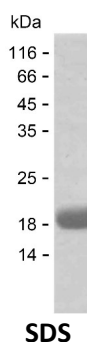
Product Name: Recombinant Human MAP1LC3A Protein
Catalog #: PEH4224



Summary

Name	MLP3A_HUMAN
Purity	Greater than 85% as determined by reducing SDS-PAGE
Endotoxin level	Please contact with the lab for this information
Tag	C-His
Accession #	Q9H492
Host	E.coli
Species	Human
Molecular Mass	15 kDa
Buffer	Phosphate buffered saline
Shipping	The product is shipped on dry ice/polar packs. Upon receipt, store it immediately at the temperature listed below.
Stability&Storage	Store at $\leq -70^{\circ}\text{C}$, stable for 6 months after receipt. Store at $\leq -70^{\circ}\text{C}$, stable for 3 months under sterile conditions after opening. Please minimize freeze-thaw cycles.
Sequence	MPSDRPFKQR RSFADRCKEV QQIRDQHPSK IPVIIERYKG EKQLPVLDKT KFLVPDHVNM SELVKIIRRR LQLNPTQAFF LLVNQHSMVS VSTPIADIYE QEKDEGFLY MVIYASQETFG

image



Background

Alternative Names	Microtubule-associated proteins 1A/1B light chain 3A (Autophagy-related protein LC3 A) (Autophagy-related ubiquitin-like modifier LC3 A) (MAP1 light chain 3-like protein 1) (MAP1A/MAP1B light chain 3 A) (MAP1A/MAP1B LC3 A) (Microtubule-associated protein 1 light chain 3 alpha)
--------------------------	---------------------------------------------------------------------------------------------------------------------------------------------------------------------------------------------------------------------------------------------------------------------------------------

Note

Product Name: Recombinant Human MAP1LC3A Protein
Catalog #: PEH4224



For Research Use Only , Not for Diagnostic Use