

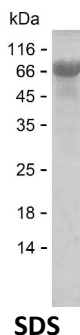
Product Name: Recombinant Human GLB1 Protein
Catalog #: PEH4202



Summary

Name	BGAL_HUMAN
Purity	Greater than 85% as determined by reducing SDS-PAGE
Endotoxin level	Please contact with the lab for this information
Tag	N-SUMO & C-His
Accession #	P16278
Host	E.coli
Species	Human
Molecular Mass	63 kDa
Buffer	Lyophilized from Phosphate buffered saline
Shipping	The product is shipped on dry ice/polar packs. Upon receipt, store it immediately at the temperature listed below.
Stability&Storage	Store at $\leq -70^{\circ}\text{C}$, stable for 12 months after receipt. Store at $\leq -70^{\circ}\text{C}$, stable for 3 months under sterile conditions after opening. Please minimize freeze-thaw cycles.
Sequence	ITVQVENEYG SYFACDFDYL RFLQKRFRHH LGDDVVLFTT DGAHKTFLLK GALQGLYTTV DFGTGSNITD AFLSQRKCEP KGPLINSEFY TGWLDHWGQP HSTIKTEAVA SSLYDILARG ASVNLYMFIG GTNFAYWNGA NSPYAAQPTS YDYDAPLSEA GDLTEKYFAL RNIIQKFEKV PEGPIPPSTP KFAYGKVTLE KLKTVGAALD ILCPSGPIKS LYPLTFIQVK QHYGFVLYRT TLPQDCSNPA PLSSPLNGVH DRAYVAVDGI PQGVLERNV ITLNIITGKAG ATLDLLVENM GRVNYGAYIN DFKGLVSNLT LSSNILDWT IFPLDTEAV RSHLGGWGHR DSGHHDEAWA HNSSNYTLPA FYMGNFSIPS GIPDLPQDTF IQFPGWTKGQ VWINGFNLGR YWPARGPQLT LFVPQHILMT SAPNTITVLE LEWAPCSSDD

image



Background

Product Name: Recombinant Human GLB1 Protein
Catalog #: PEH4202



Alternative Names

Beta-galactosidase (EC 3.2.1.23) (Acid beta-galactosidase) (Lactase) (Elastin receptor 1)

Note

For Research Use Only , Not for Diagnostic Use