

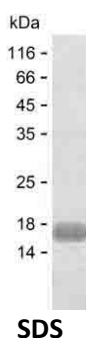
Product Name: Recombinant Human CRISPLD2 Protein
Catalog #: PEH4139



Summary

Name	CRLD2_HUMAN
Purity	Greater than 85% as determined by reducing SDS-PAGE
Endotoxin level	Please contact with the lab for this information
Tag	C-His
Accession #	Q9H0B8
Host	E.coli
Species	Human
Molecular Mass	10 kDa
Buffer	Phosphate buffered saline
Shipping	The product is shipped on dry ice/polar packs. Upon receipt, store it immediately at the temperature listed below.
Stability&Storage	Store at $\leq -70^{\circ}\text{C}$, stable for 6 months after receipt. Store at $\leq -70^{\circ}\text{C}$, stable for 3 months under sterile conditions after opening. Please minimize freeze-thaw cycles.
Sequence	PYKNGRPCSE CPPSYGGSCR NNLCYREETY TPKPETDEMN EVETAPIPEE NHVWLQPRVM RPTKPKKTS

image



Background

Alternative Names	Cysteine-rich secretory protein LCCL domain-containing 2 (Cysteine-rich secretory protein 11) (CRISP-11) (LCCL domain-containing cysteine-rich secretory protein 2)
--------------------------	---

Note

For Research Use Only , Not for Diagnostic Use