

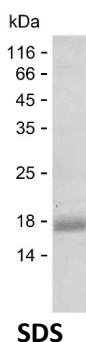
Product Name: Recombinant Human LYN Protein
Catalog #: PEH4124



Summary

Name	LYN_HUMAN
Purity	Greater than 85% as determined by reducing SDS-PAGE
Endotoxin level	Please contact with the lab for this information
Tag	C-His
Accession #	P07948
Host	E.coli
Species	Human
Molecular Mass	14 kDa
Buffer	Phosphate buffered saline
Shipping	The product is shipped on dry ice/polar packs. Upon receipt, store it immediately at the temperature listed below.
Stability&Storage	Store at $\leq -70^{\circ}\text{C}$, stable for 6 months after receipt. Store at $\leq -70^{\circ}\text{C}$, stable for 3 months under sterile conditions after opening. Please minimize freeze-thaw cycles.
Sequence	SLSDDGVDLK TQPVRNTERT IYVRDPTSNK QQRVPESQL LPGQRFQTKD PEEQGDIVVA LYPYDGIHPD DLSFKKGEKM KVLEEHGEWW KAKSLTKKE GFIPSNYVAK

image



Background

Alternative Names	Tyrosine-protein kinase Lyn (EC 2.7.10.2) (Lck/Yes-related novel protein tyrosine kinase) (V-yes-1 Yamaguchi sarcoma viral related oncogene homolog) (p53Lyn) (p56Lyn)
--------------------------	--

Note

For Research Use Only , Not for Diagnostic Use

Product Name: Recombinant Human LYN Protein
Catalog #: PEH4124

