

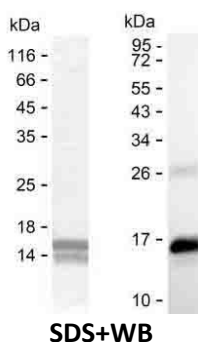
Product Name: Recombinant Human CCL21 Protein
Catalog #: PEH4101



Summary

Name	CCL21_HUMAN
Purity	Greater than 85% as determined by reducing SDS-PAGE
Endotoxin level	Please contact with the lab for this information
Tag	C-His
Accession #	O00585
Host	E.coli
Species	Human
Molecular Mass	10 kDa
Buffer	Lyophilized from Phosphate buffered saline
Shipping	The product is shipped on dry ice/polar packs. Upon receipt, store it immediately at the temperature listed below.
Stability&Storage	Store at $\leq -70^{\circ}\text{C}$, stable for 12 months after receipt. Store at $\leq -70^{\circ}\text{C}$, stable for 3 months under sterile conditions after opening. Please minimize freeze-thaw cycles.
Sequence	AILFLPRKRS QAELCADPKE LWVQQLMQHL DKTPSPQKPA QGCRKDRGAS KTGKKGKGSK GCKRTERSQT

image



Background

Alternative Names C-C motif chemokine 21 (6Ckine) (Beta-chemokine exodus-2) (Secondary lymphoid-tissue chemokine) (SLC) (Small-inducible cytokine A21)

Note

For Research Use Only , Not for Diagnostic Use