

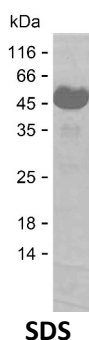
Product Name: Recombinant Human LAT Protein
Catalog #: PEH4029



Summary

Name	LAT_HUMAN
Purity	Greater than 85% as determined by reducing SDS-PAGE
Endotoxin level	Please contact with the lab for this information
Tag	N-MBP & C-His
Accession #	O43561
Host	E.coli
Species	Human
Molecular Mass	51 kDa
Buffer	Phosphate buffered saline
Shipping	The product is shipped on dry ice/polar packs. Upon receipt, store it immediately at the temperature listed below.
Stability&Storage	Store at $\leq -70^{\circ}\text{C}$, stable for 6 months after receipt. Store at $\leq -70^{\circ}\text{C}$, stable for 3 months under sterile conditions after opening. Please minimize freeze-thaw cycles.
Sequence	RLPGSYDSTS SDSLYPRGIQ FKRPHTVAPW PPAYPPVTSY PPLSQPDLLP IPRSPQPLGG SHRTPSSRRD SDGANSVASI

image



Background

Alternative Names Linker for activation of T-cells family member 1 (36 kDa phospho-tyrosine adapter protein) (pp36) (p36-38)

Note

For Research Use Only , Not for Diagnostic Use