

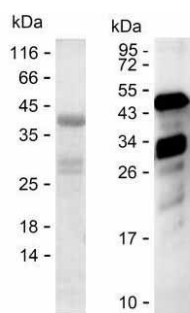
**Product Name: Recombinant Human KNG1 Protein**  
**Catalog #: PEH3889**



## Summary

<b>Name</b>	KNG1_HUMAN
<b>Purity</b>	Greater than 85% as determined by reducing SDS-PAGE
<b>Endotoxin level</b>	Please contact with the lab for this information
<b>Tag</b>	C-His
<b>Accession #</b>	P01042
<b>Host</b>	E.coli
<b>Species</b>	Human
<b>Molecular Mass</b>	36 kDa
<b>Buffer</b>	Lyophilized from Phosphate buffered saline
<b>Shipping</b>	The product is shipped on dry ice/polar packs. Upon receipt, store it immediately at the temperature listed below.
<b>Stability&amp;Storage</b>	Store at $\leq -70^{\circ}\text{C}$ , stable for 12 months after receipt. Store at $\leq -70^{\circ}\text{C}$ , stable for 3 months under sterile conditions after opening. Please minimize freeze-thaw cycles.
<b>Sequence</b>	<pre>IPTNSPELEE  TLHTITKLN  AENNATFYFK  IDNVKKARVQ  VVAGKKYFID FVARETTCSK  ESNEELTESC  ETKKLGQSLD  CNAEYVVPW  EKKIYPTVNC QPLGMISLMK  RPPGFSPFRS  SRIGEIKEET  TVSPHTSMA  PAQDEERDSG KEQGHTRRHD  WGHEKQRKHN  LGHGKHERD   QGHGHRGHHG LGHGHEQQHG  LGHGHKFKLD  DDLEHQGGHV  LDHGKHKHKG  HGHGKHKHKG KKNKGKHWGK  TEHLASSED   STTPSAQTQE  KTEGPTPIPS  LAKPGVTVTF SDFQDSDLIA</pre>

## image



SDS+WB

## Background

**Alternative Names** Kininogen-1 (Alpha-2-thiol proteinase inhibitor) (Fitzgerald factor) (High molecular weight kininogen) (HMWK) (Williams-Fitzgerald-Flaujeac factor)

**Product Name: Recombinant Human KNG1 Protein**  
**Catalog #: PEH3889**



---

[Cleaved into: Kininogen-1 heavy chain; T-kinin (Ile-Ser-Bradykinin);  
Bradykinin (Kallidin I); Lysyl-bradykinin (Kallidin II); Kininogen-1 light chain;  
Low molecular weight growth-promoting factor]

**Note**

For Research Use Only , Not for Diagnostic Use