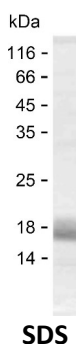


## Summary

<b>Name</b>	KI3L2_HUMAN
<b>Purity</b>	Greater than 85% as determined by reducing SDS-PAGE
<b>Endotoxin level</b>	Please contact with the lab for this information
<b>Tag</b>	C-His
<b>Accession #</b>	P43630
<b>Host</b>	E.coli
<b>Species</b>	Human
<b>Molecular Mass</b>	11 kDa
<b>Buffer</b>	Lyophilized from Phosphate buffered saline
<b>Shipping</b>	The product is shipped on dry ice/polar packs.Upon receipt, store it immediately at the temperature listed below.
<b>Stability&amp;Storage</b>	Store at $\leq -70^{\circ}\text{C}$ , stable for 12 months after receipt.Store at $\leq -70^{\circ}\text{C}$ , stable for 3 months under sterile conditions after opening. Please minimize freeze-thaw cycles.
<b>Sequence</b>	AVMDQEPAGD RTVNRQDSDE QDPQEVTYAQ LDHCVFIQRK ISRPSQRPKT PLTDTSVYTE LPNAEPRSKV VSCPRAPOSG

## image



## Background

<b>Alternative Names</b>	Killer cell immunoglobulin-like receptor 3DL2 (CD158 antigen-like family member K) (MHC class I NK cell receptor) (Natural killer-associated transcript 4) (NKAT-4) (p70 natural killer cell receptor clone CL-5) (p70 NK receptor CL-5) (CD antigen CD158k)
--------------------------	--

## Note

For Research Use Only , Not for Diagnostic Use

**Product Name: Recombinant Human KIR3DL2 Protein**  
**Catalog #: PEH3847**

---

