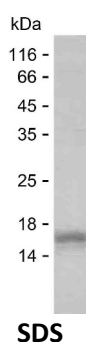


## Summary

<b>Name</b>	INLR1_HUMAN
<b>Purity</b>	Greater than 85% as determined by reducing SDS-PAGE
<b>Endotoxin level</b>	Please contact with the lab for this information
<b>Tag</b>	C-His
<b>Accession #</b>	Q8IU57
<b>Host</b>	E.coli
<b>Species</b>	Human
<b>Molecular Mass</b>	10 kDa
<b>Buffer</b>	Phosphate buffered saline
<b>Shipping</b>	The product is shipped on dry ice/polar packs. Upon receipt, store it immediately at the temperature listed below.
<b>Stability&amp;Storage</b>	Store at $\leq -70^{\circ}\text{C}$ , stable for 6 months after receipt. Store at $\leq -70^{\circ}\text{C}$ , stable for 3 months under sterile conditions after opening. Please minimize freeze-thaw cycles.
<b>Sequence</b>	AKMPRALDFS GHTHPVATFQ PSRPESVNDL FLCPQKELTR GVRPTPRVRA PATQQTRWKK DLAEDEEEEED EEDTEDGVSF

## image



## Background

<b>Alternative Names</b>	Interferon lambda receptor 1 (IFN-lambda receptor 1) (IFN-lambda-R1) (Cytokine receptor class-II member 12) (Cytokine receptor family 2 member 12) (CRF2-12) (Interleukin-28 receptor subunit alpha) (IL-28 receptor subunit alpha) (IL-28R-alpha) (IL-28RA) (Likely interleukin or cytokine receptor 2) (LICR2)
--------------------------	--

## Note

**Product Name: Recombinant Human IFNLR1 Protein**  
**Catalog #: PEH3827**



---

For Research Use Only , Not for Diagnostic Use