

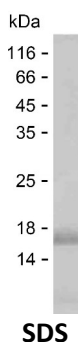
Product Name: Recombinant Human PSMA1 Protein
Catalog #: PEH3806



Summary

Name	PSA1_HUMAN
Purity	Greater than 85% as determined by reducing SDS-PAGE
Endotoxin level	Please contact with the lab for this information
Tag	C-His
Accession #	P25786
Host	E.coli
Species	Human
Molecular Mass	12 kDa
Buffer	Phosphate buffered saline
Shipping	The product is shipped on dry ice/polar packs. Upon receipt, store it immediately at the temperature listed below.
Stability&Storage	Store at $\leq -70^{\circ}\text{C}$, stable for 6 months after receipt. Store at $\leq -70^{\circ}\text{C}$, stable for 3 months under sterile conditions after opening. Please minimize freeze-thaw cycles.
Sequence	YLERHMSEFM ECNLNELVKH GLRALRETLP AEQDLTKNV SIGIVGKDLE FTIYDDDDVS PFLEGLEERP QRKAQPAQPA DEPAEKADPEP

image



Background

Alternative Names Proteasome subunit alpha type-1 (30 kDa prosomal protein) (PROS-30) (Macropain subunit C2) (Multicatalytic endopeptidase complex subunit C2) (Proteasome component C2) (Proteasome nu chain)

Note

For Research Use Only , Not for Diagnostic Use