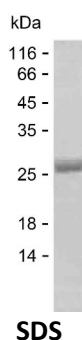


## Summary

<b>Name</b>	UBE2T_HUMAN
<b>Purity</b>	Greater than 85% as determined by reducing SDS-PAGE
<b>Endotoxin level</b>	Please contact with the lab for this information
<b>Tag</b>	C-His
<b>Accession #</b>	Q9NPD8
<b>Host</b>	E.coli
<b>Species</b>	Human
<b>Molecular Mass</b>	23 kDa
<b>Buffer</b>	Phosphate buffered saline
<b>Shipping</b>	The product is shipped on dry ice/polar packs. Upon receipt, store it immediately at the temperature listed below.
<b>Stability&amp;Storage</b>	Store at $\leq -70^{\circ}\text{C}$ , stable for 6 months after receipt. Store at $\leq -70^{\circ}\text{C}$ , stable for 3 months under sterile conditions after opening. Please minimize freeze-thaw cycles.
<b>Sequence</b>	MQRASRLKRE LHMLATEPPP GITCWQDKDQ MDDLRAQILG GANTPYEKGV FKLEVIIPER YPFEPPIRF LTPYHPNID SAGRICLDVL KLPPKGAWRP SLNIATVLTS IQLLMSEPNP DDPLMADISS EFKYNKPAFL KNARQWTEKH ARQKQKADEE EMLDNLPEAG DSRVHNSTQK RKASQLVGIE KKFHPDV

## image



## Background

<b>Alternative Names</b>	Ubiquitin-conjugating enzyme E2 T (EC 2.3.2.23) (Cell proliferation-inducing gene 50 protein) (E2 ubiquitin-conjugating enzyme T) (Ubiquitin carrier protein T) (Ubiquitin-protein ligase T)
--------------------------	--

## Note

**Product Name: Recombinant Human UBE2T Protein**  
**Catalog #: PEH3745**



---

For Research Use Only , Not for Diagnostic Use