

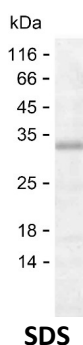
Product Name: Recombinant Human RWDD1 Protein
Catalog #: PEH3730



Summary

Name	RWDD1_HUMAN
Purity	Greater than 85% as determined by reducing SDS-PAGE
Endotoxin level	Please contact with the lab for this information
Tag	C-His
Accession #	Q9H446
Host	E.coli
Species	Human
Molecular Mass	26 kDa
Buffer	Lyophilized from Phosphate buffered saline
Shipping	The product is shipped on dry ice/polar packs. Upon receipt, store it immediately at the temperature listed below.
Stability&Storage	Store at $\leq -70^{\circ}\text{C}$, stable for 12 months after receipt. Store at $\leq -70^{\circ}\text{C}$, stable for 3 months under sterile conditions after opening. Please minimize freeze-thaw cycles.
Sequence	ELEALESIYP DSFTVLSNP PSFTITVTSE AGENDETQVT TLKFTYSEKY PDEAPLYEIF SQENLEDNDV SDILKLLALQ AEENLGMVMI FTLVTAVQEKL LNEIVDQIKT RREEEKKQKE KEAEEAEKQL FHGTPVTIEN FLNWKAKFDA ELLEIKKKRM KEEQAGKNK LSGKQLFETD HNLDTSDIQF LEDAGNNVEV DESLFQEMDD

image



Background

Alternative Names RWDD domain-containing protein 1 (DRG family-regulatory protein 2)

Note

For Research Use Only , Not for Diagnostic Use

Product Name: Recombinant Human RWDD1 Protein
Catalog #: PEH3730

