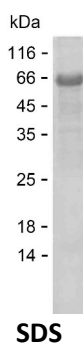


Summary

Name	SYNE2_HUMAN
Purity	Greater than 85% as determined by reducing SDS-PAGE
Endotoxin level	Please contact with the lab for this information
Tag	C-His
Accession #	Q8WXH0
Host	E.coli
Species	Human
Molecular Mass	69 kDa
Buffer	Phosphate buffered saline
Shipping	The product is shipped on dry ice/polar packs. Upon receipt, store it immediately at the temperature listed below.
Stability&Storage	Store at $\leq -70^{\circ}\text{C}$, stable for 6 months after receipt. Store at $\leq -70^{\circ}\text{C}$, stable for 3 months under sterile conditions after opening. Please minimize freeze-thaw cycles.
Sequence	EMWCEELKQE WKFVSEEIER EAIILDNLQE ELPEISKTK E AATTEELSEL LDCLCQYGEN VEKQQLLTL LLQRIRSIQN VPESGAVET VPAFQEITSM KERCNKLLQK VQKNKELVQT EIQRHSFTK EIIALKNFFQ QTTTSFQNMA FQDHPEKSEQ FEELQSILKK GKLT FENIME KLRIK YSEMY TIVPAEIESQ VEE CRKALED IDEKISNEVL KSSPSYAMRR KIEEINNG LH NVEKMLQQKS KNIEKAQEIQ KKMWDEL DLW HSKLNELDSE VQDIVEQDPG QAQEWMDNLM IPFQQYQQVS QRAECRTSQL NKATVKMEEY SDLLKSTEAW IENTSHLLAN PADYDSLRTL SHHASTVQMA LEDSEQKHN LHSIFMDLED LSIFETDEL TQSIQELSNQ VTALQQKIME SLPQIQRMAD DVVAIESEVK SMEKRVSKIK TILLSKEIFD FSPEEHLKHG EVILENIRPM KKTIAEIVSY QVELRLPQTG MKPLPVFQRT NQLLQDIKLL ENVTQEQNEL LKVVIKQTNE WDEE IENLKQ ILNNYSAQFS

image



Product Name: Recombinant Human SYNE2 Protein
Catalog #: PEH3704



Background

Alternative Names

Nesprin-2 (KASH domain-containing protein 2) (KASH2) (Nuclear envelope spectrin repeat protein 2) (Nucleus and actin connecting element protein) (Protein NUANCE) (Synaptic nuclear envelope protein 2) (Syne-2)

Note

For Research Use Only , Not for Diagnostic Use