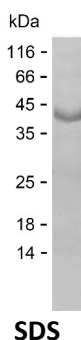


Summary

Name	KMT2C_HUMAN
Purity	Greater than 85% as determined by reducing SDS-PAGE
Endotoxin level	Please contact with the lab for this information
Tag	C-His
Accession #	Q8NEZ4
Host	E.coli
Species	Human
Molecular Mass	31 kDa
Buffer	Phosphate buffered saline
Shipping	The product is shipped on dry ice/polar packs. Upon receipt, store it immediately at the temperature listed below.
Stability&Storage	Store at $\leq -70^{\circ}\text{C}$, stable for 6 months after receipt. Store at $\leq -70^{\circ}\text{C}$, stable for 3 months under sterile conditions after opening. Please minimize freeze-thaw cycles.
Sequence	KCKNCRICIE CGTRSSSQWH HNCLICDNCY QQQDNLC PFC GKCYHPELQK DMLHCNMCKR WVHLECDKPT DHELDLTKLKE EYICMYCKHL GAEMDRLQPG EEVEIAELTT DYNNEMEVEG PEDQMV FSEQ AANKDVNGQE STPGIVPDAV QVHTEEQQS HPSESLD TDS LLI AVSSQHT VNTELEKQIS NEVDS EDLKM SSEVKHICGE DQIEDKMEVT ENIEVVTHQI TVQQEQLQLL EEPETVVSRE

image



Background

Alternative Names	Histone-lysine N-methyltransferase 2C (Lysine N-methyltransferase 2C) (EC 2.1.1.354) (Homologous to ALR protein) (Myeloid/lymphoid or mixed-lineage leukemia protein 3)
--------------------------	---

Product Name: Recombinant Human KMT2C Protein
Catalog #: PEH3687



Note

For Research Use Only , Not for Diagnostic Use