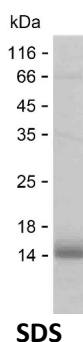


Summary

Name	KIRR3_HUMAN
Purity	Greater than 85% as determined by reducing SDS-PAGE
Endotoxin level	Please contact with the lab for this information
Tag	C-His
Accession #	Q8IZU9
Host	E.coli
Species	Human
Molecular Mass	15 kDa
Buffer	Lyophilized from Phosphate buffered saline
Shipping	The product is shipped on dry ice/polar packs. Upon receipt, store it immediately at the temperature listed below.
Stability&Storage	Store at $\leq -70^{\circ}\text{C}$, stable for 12 months after receipt. Store at $\leq -70^{\circ}\text{C}$, stable for 3 months under sterile conditions after opening. Please minimize freeze-thaw cycles.
Sequence	VSAKNDIRVE IVHKEPASGR EGEEHSTIKQ LMMDRGEFQQ DSVLKQLEVL KEEKEFQNL KDPTNGYYSV NTFKEHHSTP TISLSSCQPD LRPAGKQRVP TGMSFTNIYS

image



Background

Alternative Names	Kin of IRRE-like protein 3 (Kin of irregular chiasm-like protein 3) (Nephrin-like protein 2) [Cleaved into: Processed kin of IRRE-like protein 3]
--------------------------	---

Note

For Research Use Only , Not for Diagnostic Use