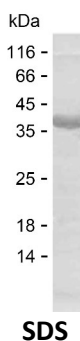


## Summary

<b>Name</b>	IMPG1_HUMAN
<b>Purity</b>	Greater than 85% as determined by reducing SDS-PAGE
<b>Endotoxin level</b>	Please contact with the lab for this information
<b>Tag</b>	C-His
<b>Accession #</b>	Q17R60
<b>Host</b>	E.coli
<b>Species</b>	Human
<b>Molecular Mass</b>	32 kDa
<b>Buffer</b>	Phosphate buffered saline
<b>Shipping</b>	The product is shipped on dry ice/polar packs. Upon receipt, store it immediately at the temperature listed below.
<b>Stability&amp;Storage</b>	Store at $\leq -70^{\circ}\text{C}$ , stable for 6 months after receipt. Store at $\leq -70^{\circ}\text{C}$ , stable for 3 months under sterile conditions after opening. Please minimize freeze-thaw cycles.
<b>Sequence</b>	RIFLD RIPDT GEYQDWVSIC QQETFCLFDI GKNFNSQEH LDLLQRIKQ RSFPDRKDEI SAEKTLGEPG ETIVISTDVA NVSLGPFPLT PDDTLLNEIL DNTLN DTKMP TTERETEFV LEEQRVELSV SLVNQKFKA E LADSQSPYYQ ELAGKSQLQM QKIFKKLPGF KKIHV LGFRP KKEKDGSSST EMQLTAIFKR HSAEAKSPAS DLLSFDSNKI ESEEVYHGTM EEDKQPEIYL TATDLKRLIS KALEEEQSLD

## image



## Background

<b>Alternative Names</b>	Interphotoreceptor matrix proteoglycan 1 (Interphotoreceptor matrix proteoglycan of 150 kDa) (IPM-150) (Sialoprotein associated with cones and rods)
--------------------------	------------------------------------------------------------------------------------------------------------------------------------------------------

**Product Name: Recombinant Human IMPG1 Protein**  
**Catalog #: PEH3640**

---



**Note**

For Research Use Only , Not for Diagnostic Use