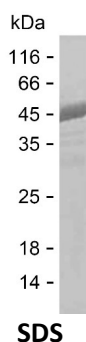


Summary

Name	LAMA4_HUMAN
Purity	Greater than 85% as determined by reducing SDS-PAGE
Endotoxin level	Please contact with the lab for this information
Tag	C-His
Accession #	Q16363
Host	E.coli
Species	Human
Molecular Mass	45 kDa
Buffer	Phosphate buffered saline
Shipping	The product is shipped on dry ice/polar packs. Upon receipt, store it immediately at the temperature listed below.
Stability&Storage	Store at $\leq -70^{\circ}\text{C}$, stable for 6 months after receipt. Store at $\leq -70^{\circ}\text{C}$, stable for 3 months under sterile conditions after opening. Please minimize freeze-thaw cycles.
Sequence	VNEINATIYL LKTKLSEREN QYALRKIQIN NAENTMKSLI SDVEELVEKE NQASRKGQLV QKESMDTINH ASQLVEQAHD MRDKIQEINN KMLYGGEEHE LSPKEISEKL VLAQKMLEEI RSRQPFFTQR ELVDEEADEA YELLSQAESW QRLHNETRTL FPVVLEQLDD YNAKLSDLQE ALDQALNYVR DAEDMNRATA ARQRDHEKQQ ERVREQMEVV NMSLSTSADS LTTPrTLSE LDDIKNASG IYAEIDGAKS ELQVKLSNLS NLSHDLVQEA IDHAQDLQQE ANELSRKLHS SDMNGLVQKA LDASNVYENI VNYVSEANET AEFALNTTDR IYDAVSGIDT QIYHKDESE NLLNQARELQ AKAESSSDEA

image



Background

Alternative Names Laminin subunit alpha-4 (Laminin-14 subunit alpha) (Laminin-8 subunit

Product Name: Recombinant Human LAMA4 Protein
Catalog #: PEH3637



alpha) (Laminin-9 subunit alpha)

Note

For Research Use Only , Not for Diagnostic Use