

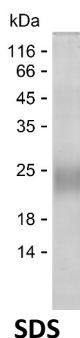
Product Name: Recombinant Human RALB Protein
Catalog #: PEH3525



Summary

Name	RALB_HUMAN
Purity	Greater than 85% as determined by reducing SDS-PAGE
Endotoxin level	Please contact with the lab for this information
Tag	C-His
Accession #	P11234
Host	E.coli
Species	Human
Molecular Mass	22 kDa
Buffer	Phosphate buffered saline
Shipping	The product is shipped on dry ice/polar packs. Upon receipt, store it immediately at the temperature listed below.
Stability&Storage	Store at $\leq -70^{\circ}\text{C}$, stable for 6 months after receipt. Store at $\leq -70^{\circ}\text{C}$, stable for 3 months under sterile conditions after opening. Please minimize freeze-thaw cycles.
Sequence	TLQFMYDEFV EDYEPTKADS YRKKVVDLGE EVQIDILDTA GQEDYAAIRD NYFRSGEGFL LVFSITEHES FTATAEFREQ ILRVKAEEDK IPLLVVGNK DLEERRQVPV EEARSKAE EW GVQYVETSAK TRANVDK VFF DLMREIRTKK MSENKDKNGK KSSKNKKSFK

image



Background

Alternative Names Ras-related protein Ral-B (EC 3.6.5.2)

Note

For Research Use Only , Not for Diagnostic Use

Product Name: Recombinant Human RALB Protein
Catalog #: PEH3525

