

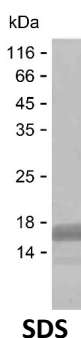
Product Name: Recombinant Human SIGLEC6 Protein
Catalog #: PEH3486



Summary

Name	SIGL6_HUMAN
Purity	Greater than 85% as determined by reducing SDS-PAGE
Endotoxin level	Please contact with the lab for this information
Tag	C-His
Accession #	O43699
Host	E.coli
Species	Human
Molecular Mass	11 kDa
Buffer	Phosphate buffered saline
Shipping	The product is shipped on dry ice/polar packs. Upon receipt, store it immediately at the temperature listed below.
Stability&Storage	Store at $\leq -70^{\circ}\text{C}$, stable for 6 months after receipt. Store at $\leq -70^{\circ}\text{C}$, stable for 3 months under sterile conditions after opening. Please minimize freeze-thaw cycles.
Sequence	KTRRKAAQP VQNTDDVNPV MVSGSRGHQH QFQTGIVSDH PAEAGPISED EQELHYAVLH FHKVQPQEPK VTDTEYSEIK

image



Background

Alternative Names Sialic acid-binding Ig-like lectin 6 (Siglec-6) (CD33 antigen-like 1) (CDw327) (Obesity-binding protein 1) (OB-BP1) (CD antigen CD327)

Note

For Research Use Only , Not for Diagnostic Use